

CABINET - SUBJECTS FOR CONSIDERATION, 16 SEPTEMBER 2002 11:00 AM

1 New Initiatives/Policy Matters

Not Relevant

105

MTOU06/02CS

Total Solar Eclipse - 4 December 2002

APPROVED

All Ministers

Not Relevant

CABINET COVER SHEET

1. **TITLE:** Total Solar Eclipse – 4 December 2002
2. **MINISTERS:** Hon Mike Rann MP
Premier

Hon Jane Lomax-Smith MP
Minister for Tourism
3. **PURPOSE:** To seek Cabinet approval for a special allocation of \$600,000 for:
- contribution to upgrade Ceduna effluent system (\$220,000);
 - information and basic infrastructure at 'Eclipse Centreline Sites' (\$210,000);
 - contingency sum for events requiring additional response by state or local government agencies and for rehabilitation works (\$170,000);
- in preparation for the total solar eclipse event on 4 December 2002.
4. **RELATIONSHIP TO GOVERNMENT POLICY:** The proposal is consistent with Government policy to:
- ensure public safety, including the provision of police and emergency services;
 - provide medical services and information on safety precautions;
 - protect the environment;
 - support regional initiatives, particularly in relation to economic and social development; and
 - provide tourism benefits.
5. **RESOURCES REQUIRED FOR IMPLEMENTATION:** A direct financial allocation by the State Government of \$600,000 is required.
- In addition, resources have and will be allocated from internal budgets by the SA Tourism Commission, Department of Human Services, SAPOL, Transport SA, SA Water, National Parks & Wildlife SA, SA Ambulance, CFS, SES and Primary Industries & Resources SA. SAICORP will be responsible for public liability issues.
6. **COMMUNITY AND ENVIRONMENTAL IMPACT:** Small Business – the large numbers of additional visitors to remote outback areas will provide a significant opportunity for small businesses in these areas.
- Regional – while the extra visitors will bring additional business to outback areas, services and infrastructure are likely to be under severe pressure.

Environmental – action is required to avoid environmental damage to sea (through effluent discharge at Ceduna) and to land and property in pastoral areas.

7. RISKS

- Damage to Australia's image as "clean and green".
- Visitor health and safety issues.
- Lack of available funds for preventative measures at this time could result in much greater expenditure during the eclipse period.
- Protesters may try to capitalise on overseas media presence.

8. CONSULTATION:

The "Year of the Outback Steering Committee" is overseeing planning and management for the total solar eclipse. The Steering Committee comprises SA Tourism Commission, Transport SA, Department of Human Services, Outback Areas Community Development Trust, SAPOL, National Parks & Wildlife SA, Primary Industries & Resources SA, Office of Regional Affairs, Bureau of Meteorology and the Royal Flying Doctor Service.

The Environmental Protection Authority, SA Water and KESAB have also provided advice.

Extensive consultation has occurred with Outback communities and Local Government across the South Australian Outback, NRG Flinders (Town Manager Leigh Creek), BAE Systems (Town Manager Woomera), Northern Regional Development Board and tourism operators.

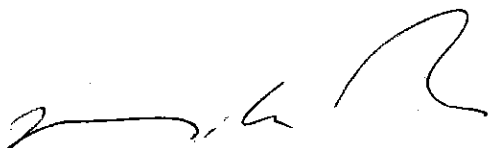
9. URGENCY:

This allocation is being sought to allow the State Government, through the Year of the Outback Steering Committee, to proceed as quickly as possible with the finalisation of plans to ensure the State is able to cope with the expected influx of visitors seeking an eclipse experience. Public safety and amenity and environmental management are the key challenges for the State Government.

10. RECOMMENDATIONS:

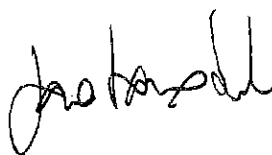
It is recommended that Cabinet:

- 4.1 Approves a special allocation of \$600,000 for:
- contribution to upgrade the effluent system at Ceduna (\$220,000);
 - information and basic infrastructure at 'Eclipse Centreline Sites' (\$210,000);
 - contingency sum for unforeseen events requiring additional response by state or local government agencies and for rehabilitation works (\$170,000);
- in preparation for the total solar eclipse event on 4 December 2002.
- 4.2 Notes that of this funding of \$600,000:
- \$430,000 will be advanced to SA Tourism Commission for Ceduna effluent works and information and infrastructure requirements for 'Eclipse Centreline Sites';
 - after the eclipse, local and state government agencies may seek reimbursement for unforeseen events requiring additional response and for rehabilitation works on an acquittal basis to a maximum of \$170,000;
 - all expenditure items will be approved by the Chief Executive of the South Australian Tourism Commission or his delegate.
- 4.3 Notes that the State Government's Year of the Outback Steering Committee has been and will continue to plan for and manage the total solar eclipse event.
- 4.4 Notes that additional resources have and will be allocated from internal budgets by the SA Tourism Commission, Department of Human Services, SAPOL, Transport SA, SA Water, National Parks & Wildlife SA, SA Ambulance, CFS, SES and Primary Industries & Resources SA. SAICORP will be responsible for public liability issues.



MIKE RANN
Premier

6 19 /2002



JANE LOMAX-SMITH
Minister for Tourism

319 /2002

Minutes forming Enclosure to:

MT/06/02/CS

TO: THE PREMIER FOR CABINET

RE: TOTAL SOLAR ECLIPSE – 4 DECEMBER 2002

1. PROPOSAL

- 1.1 Approves a special allocation of \$600,000 for:
 - contribution to upgrade the effluent system at Ceduna (\$220,000);
 - information and basic infrastructure at 'Eclipse Centreline Sites' (\$210,000);
 - contingency sum for unforeseen events requiring additional response by state or local government agencies and for rehabilitation works (\$170,000);in preparation for the total solar eclipse event on 4 December 2002.
- 1.2 Notes that of this funding of \$600,000:
 - \$430,000 will be advanced to SA Tourism Commission for Ceduna effluent works and information and infrastructure requirements for 'Eclipse Centreline Sites';
 - after the eclipse, local and state government agencies may seek reimbursement for unforeseen events requiring additional response and for rehabilitation works on an acquittal basis to a maximum of \$170,000;
 - all expenditure items will be approved by the Chief Executive of the South Australian Tourism Commission or his delegate.
- 1.3 Notes that the State Government's Year of the Outback Steering Committee has been and will continue to plan for and manage the total solar eclipse event.
- 1.4 Notes that additional resources have and will be allocated from internal budgets by the SA Tourism Commission, Department of Human Services, SAPOL, Transport SA, SA Water, National Parks & Wildlife SA, SA Ambulance, CFS, SES and Primary Industries & Resources SA. SAICORP will be responsible for public liability issues.

2. BACKGROUND

- 2.1 A total solar eclipse will occur on 4 December 2002. This phenomenon will be visible from relatively few population centres on earth, two of which will be the towns of Ceduna and Lyndhurst. The arc of the umbral path (or moon shadow) starts at dawn in the Atlantic Ocean, west of the African continent and passes across Angola, Mozambique and the Indian Ocean, before the moon's shadow crosses the South Australian coastline at Ceduna. The umbral path traverses South Australia in a north easterly direction and crosses the State border at Cameron's Corner, 780km from Ceduna. The moon's shadow will become invisible shortly after crossing the border, when the sun sets.

- 2.2 A map showing the umbral path is attached (Attachment 1). As can be seen on the map, the shadow passes over extremely isolated areas of the State with limited infrastructure, services and access. This is remote, hot, dry and fragile country with consequent dangers for ill-prepared and inexperienced travellers.
- 2.3 Following consultation with local communities, local governments, emergency services committees, astronomical enthusiasts and tour operators, it has become obvious that significant numbers of people want to be at the centreline of the umbral shadow of the forthcoming eclipse on 4 December. The closer one is to the centreline, the darker it will be, which maximizes the experience and photographic opportunities.
- 2.4 The event will receive considerable national and international media attention. For example, CNN will have a crew based at Ceduna, the 9 Network is planning a live telecast, and there will be a live broadcast from Ceduna to Japan.
- 2.5 It is estimated that between 20,000 to 50,000 people will travel to points along the total solar eclipse path in the South Australian Outback, including significant numbers of overseas scientists (eg NASA scientists), journalists and tourists. To date, accommodation within four hours drive of Ceduna is fully booked (from Port Lincoln to Whyalla) and temporary tent cities are being set up by tour operators in centres such as Ceduna and Woomera. Monitoring of accommodation and tour group bookings is constantly being assessed, and booking figures indicate that at least 19,000 people will be in Ceduna alone on the day of the eclipse. However, it is impossible to estimate exactly how many people will visit the area, as many casual visitors will make their own way there to experience the natural phenomenon.
- 2.6 The expected influx of people to South Australia's Outback will undoubtedly present significant challenges with regard to public safety, risk management, infrastructure needs and environmental management.
- 2.7 It is important to recognise that people will travel to South Australia's Outback to experience this natural phenomena regardless of any promotion, planning or management by local communities or the Government. It is clear however that it is the responsibility of the State Government to ensure that people are warned of the potential dangers of travelling in the Outback, receive sound advice and that provisions are in place to monitor and manage people's movement and provide for their safety and welfare.
- 2.8 The expected influx of people also demands that action be taken to ensure that the natural environment is protected. The State Government's Food for the Future Group heavily promotes South Australia as "clean" and "green" in the production of its food in our key international food markets. In Ceduna, for example, the population is expected to grow from its current 3,500 to 20,000 or more. This will undoubtedly put undue pressure on Ceduna's ageing effluent system. Any spillage of effluent into the Bay will not only damage the natural environment and marine life, but will also have serious consequences for associated industries such as the nearby oyster farms and thus on public health.
- 2.9 Protests are also considered to be a potential risk during the event. As a total eclipse has some spiritual significance, it is highly likely that an "alternative" element will be attracted to the Outback and may use the opportunity to stage a protest, particularly as large numbers of international and national media will be present. Potential targets will be the Detention Centre at Woomera, mining at Olympic Dam and/or water extraction from the artesian basin at Lake Eyre

South. Protests will put a major strain on police resources and cause adverse publicity for South Australia.

2.10 With international media attention focussed on our State at this time (eg CNN crew reporting from Ceduna), South Australia's image as a "clean and green" food producer and a safe tourist destination may be damaged, rather than enhanced, depending on Government awareness and its ability to respond to any crises which may arise.

2.11 Management of the Total Solar Eclipse Event

The safety and general welfare of the enormous number of people expected to travel to the South Australian Outback for the eclipse experience is, by definition, a 'whole of Government' responsibility, given the number of agencies affected.

A State Government Committee known as the Year of the Outback Steering Committee under the chairmanship of the Chief Executive of the South Australian Tourism Commission has been planning for this event since October 2001. The Steering Committee comprises representatives from Transport SA, Department of Human Services, Outback Areas Community Development Trust, SAPOL, National Parks & Wildlife SA, Primary Industries and Resources SA and the Royal Flying Doctor Service. The Environmental Protection Authority, SA Water and KESAB have also provided advice.

2.12 In planning for this event, the Steering Committee is focussing on ensuring the provision of proper disposal of effluent, toilet facilities, the provision of water and power, public lighting, medical facilities, security and police control, provision of shaded areas, signage, information, car parking and rubbish bins, as well as restoration of sites.

2.13 The Steering Committee has been working collaboratively and extensively with communities in Ceduna, Leigh Creek, Lyndhurst, Marree, Andamooka, Woomera, Roxby Downs and Port Augusta as well as Local Governments across the South Australian Outback in developing plans to ensure the State is able to cope with the expected influx of visitors.

2.14 The Year of the Outback Steering Committee has undertaken significant work on the development of emergency response and risk management strategy plans for Ceduna and Flinders Ranges and Outback areas of South Australia.

2.15 The Infrastructure and Emergency Services Committee for Ceduna, chaired by Senior Sergeant Kym Thomas, has completed its Risk Management Plan and regional offices of individual agencies, including the SAPOL, CFS, SES, Ambulance and Fire Department, have developed contingency plans to cope with the influx of visitors expected in Ceduna. These agencies are prepared to absorb much of the additional costs identified at this time from within existing budgets.

2.16 An Infrastructure and Emergency Services Committee has been established for the Flinders Ranges and Outback areas of South Australia. Superintendent Wayne Bristow of Port Augusta Police chairs this Committee.

The Committee is currently working through a complete risk assessment plan and representatives on the Committee from Transport SA, SAPOL, CFS, SES, Fire Department, SA Ambulance, Department of Human Services, Primary Industries and Resources SA, National Parks and Wildlife SA, Bureau of Meteorology and the Royal Flying Doctors Service are formulating their agency

emergency response plans and actions required to ensure safety of people travelling through the South Australian Outback to view the total solar eclipse.

Mr Alec Stevens, formerly of the SAPOL and a risk assessment expert, has been commissioned by the Year of the Outback Steering Committee, with funding from Tourism SA, to work with the Flinders Ranges and Outback Infrastructure and Emergency Services Committee in developing the Risk Management Plan. The Risk Management Plan is due for completion by 30 September 2002.

2.17 Town Planning

The gathering of such large numbers of people will significantly strain resources in South Australian Outback towns and whilst preliminary work has been undertaken to identify and deal with the likely impacts, public safety and environmental management are now the key challenges for the Government.

2.17.1 Ceduna

It is predicted that the challenge of managing potential problems will be greatest in Ceduna, which is in the direct centreline path of the total solar eclipse. Ceduna, whilst relatively isolated, is easily accessible by road, as well as by air and sea.

Current information regarding bookings in the region indicate that at least 19,000 visitors will be in Ceduna on the day of the eclipse, with a significant number staying in the Ceduna area for several days. Casual visitors could bring numbers to 30,000 or more, particularly if there is cloud or rain in the outback areas.

The District Council of Ceduna has taken a pro-active role in preparing for the eclipse and planning is well advanced in the township. The Council is represented on the Infrastructure and Emergency Services Committee has participated in the detailed risk assessment/emergency response strategy developed by the committee.

With financial assistance from the South Australian Tourism Commission, the District Council of Ceduna contracted Mr Rob Curkpatrick as Events Coordinator in January 2002. Mr Curkpatrick has been working closely with key stakeholders, including the SAPOL, emergency services agencies and the South Australian Tourism Commission.

The major risk in Ceduna is posed by the town's ageing effluent system which is inadequate for the numbers of visitors expected. The system is just able to meet the needs of a permanent population of 3,500 and a visiting population which may reach 6,000 for a period of two days during Oyster Fest. During the eclipse, with potentially two - three times as many people in the town for a longer period, there is an extreme risk of overflow into the sea where, due to the movement of the tides, the pollution would be carried straight to the aquaculture areas nearby.

PIRSA advise that, in these circumstances, they would be forced to close the aquaculture areas in the Ceduna region during the eclipse as a precautionary measure. This would mean that the oyster industry would be unable to take advantage of this opportunity to showcase South Australian oysters to international visitors as they would be unable to sell their produce.

However, providing the effluent system is upgraded to cope with the expected additional load, PIRSA have agreed to allow the area to remain open and to increase their monitoring regime from a bi-monthly to a daily basis for the week of the eclipse. The cost to PIRSA of this additional monitoring will be around \$2-3,000 and will be absorbed by this department.

Other risks identified by the Ceduna Infrastructure and Emergency Services Committee include:

- Traffic chaos.
- Lack of water
- Rain
- Fire
- Missing Persons
- Extreme weather (summer in the Outback)
- Motor accidents/injuries
- Aircraft incidents
- Marine accidents
- Vehicle breakdowns
- Food contamination
- Insect and snake bites
- Eye damage
- Sunburn and dehydration
- Limited medical resources
- Remote medical evacuation
- Human waste
- Environmental damage to land or sea
- Fuel supplies
- Food supplies
- Power cuts
- Driver fatigue

As previously noted, the council, police, emergency services, fire, ambulance, health, transport, primary industries and national parks are working at the local level to ensure that sufficient personnel and equipment will be available to cover the additional load on day to day services and to deal with any emergencies. This is likely to have a significant impact on departmental budgets at a time of budget stringency.

A festival, sponsored by local businesses, will be held over two days in the main street and foreshore area, culminating with fireworks and an open air concert after dark on 4 December 2002

2.17.2 Port Augusta

Port Augusta is a long way from the path of totality, but the city will play an important role because much of the eclipse-related traffic, whether going north to Woomera/Glendambo/Leigh Creek or west to Ceduna, will pass through Port Augusta. It is expected that many of these visitors will wait in Port Augusta, until it is known which Outback location will offer the best weather conditions for the eclipse experience. Consequently, there will be a considerable demand for food, fuel, accommodation and communication services.

As advised, chief of SAPOL's Northern Region, Superintendent Wayne Bristow is the Chairman of the Infrastructure and Emergency Planning Committee for the Flinders Ranges and Outback and a Risk Management Plan is due for completion by end of September 2002. The regional offices of the relevant government agencies are aware of Port Augusta's role and community briefing sessions for residents and businesses will be held in the coming months so that they can be informed and prepared.

2.17.3 Woomera

Whilst not in the path of totality, Woomera is only 40 kilometres from the centreline. The path of totality will cross Purple Downs Station (approximately half way between Roxby Downs and Woomera) and Wirraminna Station (on the Stuart Highway). There are more than 600 international guests booked into Woomera. Accommodation in Woomera is in high demand and BAE Systems (Town Managers) have been opening more camping options around the Village. The town can service up to 7,000 visitors comfortably due to its past history of larger population with accompanying infrastructure. BAE Systems is planning two days of activities to celebrate the eclipse and will establish a viewing area at Koolymilka on the Woomera restricted area.

The local police force advise that there may be a higher risk of protests at Woomera Detention Centre and Olympic Dam uranium mine during this period when the region is under increased international scrutiny due to the eclipse. This is being taken into account in their planning.

2.17.4 Glendambo/Roxby Downs/Andamooka/Wirraminna

Each of these communities is relatively close to the centreline and undoubtedly will experience an increase in visitor numbers. Roxby Downs, with its excellent infrastructure, as well as Andamooka will be important in servicing visitors for food, fuel and accommodation. Some infrastructure support will be needed in Wirraminna and lack of water availability in Glendambo is considered a high potential risk.

2.17.5 Lyndhurst.

Sharing a centreline location with Ceduna, Lyndhurst, to the north of Leigh Creek, is expected to have a large number of visitors. The centreline of the eclipse is actually twelve kilometres north of Lyndhurst on Farina Station. This area will arguably be under intense pressure from visitors.

A "Dance Party" known as the 'Outback Eclipse Festival' is being planned by a commercial entity in Lyndhurst. Organisers of the Festival are hoping to attract around 3,000 people. However, there is concern regarding the operations of this Festival and an assessment is being undertaken through the Chair of the Infrastructure & Emergency Services Committee, Spt Wayne Bristow of the SAPOL as to whether the Festival should be allowed to continue.

Lyndhurst has a population of around 20 people, and virtually no infrastructure and as a consequence will come under pressure to deliver services well outside of its capacity. The community will need a considerable amount of assistance in areas such as public amenities, water storage, signage and crowd control. The area is administered by the Outback Areas Community Development Trust.

2.17.6 Leigh Creek

In a similar vein to Woomera, Leigh Creek will be a service centre for people travelling to Lyndhurst and beyond. Leigh Creek will also plan two days of activities that include street markets, mine tours and adventure activities.

3 DISCUSSION

3.1 As stated above, the State has a responsibility to ensure that visitors remain safe and the environment is not adversely affected. The primary demands for the State will be the provision of proper disposal of effluent, toilet facilities, the supply of water and power, campsite facilities, shaded areas (particularly given the potential for high temperatures), lighting, the availability of medical services, police and emergency services and provision of information regarding viewing the eclipse, safety and health issues.

3.2 Efficient planning for the event is also required so that we can provide visitors with access to specific sites, which involves gaining the relevant approvals from pastoral leaseholders and the traditional Aboriginal landowners. This is currently being negotiated and the outcomes are likely to have funding implications.

3.3 'Eclipse Centreline Sites'

The State Government's Year of the Outback Steering Committee, on advice from the Emergency Response Committees set up in Ceduna and the Flinders Ranges and Outback, recommends that the best way to manage the large numbers of people is by establishing four 'Eclipse Centreline Sites', close to sealed highways, at the following locations:

- Ceduna
- Wirraminna (80 kilometres north of Pimba, on the Sturt Highway)
- Purple Downs (mid way between Woomera and Roxby Downs)
- Farina Station (12 kilometres north of Lyndhurst)

The establishment of these four 'Eclipse Centreline Sites' has been devised in order to contain the public into theoretically manageable groups. In this way the impact on the environment will be reduced and the safety and welfare of visitors catered for with greater certainty.

Apart from Ceduna, the other three 'Eclipse Centreline Sites' will not provide visitors with facilities for camping overnight. The infrastructure required at these sites will include parking areas, information services, access road to site, bunting and droppers, toilet block, public lighting tower (the eclipse is 40 minutes prior to darkness), water supply, security, marquee (shelter, St Johns medical services and information), waste disposal and car parking.

In addition, the sites will require the payment of the appropriate fees to pastoralists for use and rehabilitation of their land. Previous experience from the Outback Cattle Drive indicates that it will be necessary to pay sums of money to the traditional Aboriginal owners for access to their traditional lands. Negotiations are still underway, but it is hoped that this cost will not exceed a total of \$15,000. This access issue almost prevented the Outback Cattle Drive and Tourism SA are treating the matter very carefully.

It is estimated that the cost to set up the four 'Eclipse Centreline Sites' at Ceduna, Wirraminna, Purple Downs and Farina Station is \$52,500 each, totalling \$210,000 (these costs are detailed in section 3.6.2).

3.4 Designated Service Centres Servicing 'Eclipse Centreline Sites'

Apart from Ceduna, as there are no facilities at the other three 'Eclipse Centreline Sites', it is proposed that these sites be serviced by Designated Service Centres.

These are communities on the centreline or communities which will provide direct support to the 'Eclipse Centreline Sites' and are:

- Ceduna
- Port Augusta
- Woomera
- Roxby Downs
- Lyndhurst
- Leigh Creek
- Glendambo
- Pimba
- Andamooka
- Marree
- Copley
- Streaky Bay
- Wudinna

Some additional infrastructure may be required, particularly additional water supplies at Lyndhurst and Glendambo. Any claim from these communities will be considered by Tourism SA for reimbursement from the contingency monies.

3.5 Effluent System – Ceduna

The District Council of Ceduna believes the influx of people to Ceduna (as advised the population is expected to grow from its current 3,500 to 20,000 plus) will put undue pressure on the effluent system, leading to the spillage of effluent into the Bay. As discussed, this would obviously be damaging for the environment and the associated industries and for Australia's image as 'clean and green'.

The Environmental Protection Authority and the Department of Human Services have made it very clear that under no circumstances can any effluent be released into the sea at Ceduna. As previously noted, Aquaculture SA would close the aquaculture leases down on a temporary basis as a precautionary measure if Ceduna's effluent system were not upgraded.

An independent assessment of the capabilities of the existing effluent system to cater for increased numbers expected has now been undertaken by the District Council of Ceduna and the Department of Human Services. It is strongly recommended that, in order to cater for the increased numbers of people, four pumps be significantly upgraded. This investment will also secure the long term future of Ceduna's aquaculture leases, by ensuring that the system will cope with increasing numbers of visitors during Oyster Fest and other events. The estimated cost of the upgrade to the Ceduna effluent system is \$471,870. Of this \$281,549 is specifically attributed to cater for the expected increase in numbers of people for the total solar eclipse event.

Council has advised that it cannot fund the total cost of the required new infrastructure. Investigations by DPC have indicated that finance from the Septic Tank Effluent Disposal Scheme (STEDS) (which is funded by State Government and administered by the Local Government Association) is not available as STEDS provides for new systems, not upgrading works.

It is therefore recommended that the State Government provide financial assistance of \$220,000 towards the overall cost.

Given the tight timeframe and the essential nature of this upgrade, the Council have been forced to place an order for the works in advance of any decision regarding funding. The Council have assured Government that the work will be completed and commissioned prior to the eclipse. Details of the works and associated costs to upgrade Ceduna's effluent system are attached (refer to Attachment 2).

3.6 Budget

3.6.1 The total funding required from Government, in addition to funds contributed by Tourism SA and costs to be absorbed by departments, is \$600,000. The breakdown of this overall cost is:

Item	Expenditure
Ceduna Effluent System Upgrade (47% of total cost)	\$220,000
Information and Infrastructure at 'Eclipse Centreline Sites'	\$210,000
TOTAL	\$430,000

The remaining sum of \$170,000 will be set aside for reimbursement of extraordinary expenses borne by state and local government authorities and for reinstatement works after the eclipse.

3.6.2 Details of information and infrastructure at the four 'Eclipse Centreline Sites' follow:

	Ceduna	Wirraminna	Purple Downs	Farina
PUBLIC SAFETY				
Information (incl. Staff, literature and advice)	2000	2000	2000	2000
Signage	2000	2000	2000	2000
Lighting Towers	5000	5000	5000	5000
HEALTH & MEDICAL SERVICES				
Marquee (operational centre & public shelter)	1500	1500	1500	1500
Staff & equipment	3000	2000	2000	2000
PUBLIC AMENITIES				
Toilet rental & maintenance	18000	9000	9000	9000
WATER SUPPLY				
Transport		1500	1500	1500
Storage		3000	3000	3000
ENVIRONMENTAL MANAGEMENT				
Waste Management				
Bin Hire & Removal	6000	3000	3000	3000
Public Roads				
Grading of access roads, bunting droppers to assist with environmental management	5000	5000	5000	5000
Car Parking (Temporary)				
Surface preparation to minimise environmental impact	5000	3500	3500	3500
Signage & monitoring	3000	3000	3000	3000
Barriers	2000	2000	2000	2000

FEES				
Land Rehabilitation		5000	5000	5000
Aboriginal Site Clearance Costs		5000	5000	5000
TOTAL	52500	52500	52500	52500
GRAND TOTAL	\$210,000			

3.6.3 Accountability of Expenditure

To ensure responsible accountability of this funding it is suggested that the Chief of the South Australian Tourism Commission or his delegate approve all expenditure items on presentation of appropriate invoices.

3.7 Other Revenue Sources

Other potential revenue sources, including private sponsorships, entrance fees to 'Eclipse Centreline Sites' and exploitation of commercial opportunities, have been considered and rejected by the Year of the Outback Steering Committee as inappropriate for this event. In particular, it is not recommended that revenue be collected from the proposed eclipse experience sites as this may discourage people from using the designated sites and increase the problem of ensuring public safety.

3.8 Resource Implications

3.8.1 Internal Resources Allocated by Government Agencies

A number of Government Departments and Agencies have spent considerable time, effort and resources in planning for the eclipse through the Year of the Outback Steering Committee and at the local level, through the Ceduna and the Flinders Ranges and Outback Areas Infrastructure and Emergency Services Committees.

3.8.1.1 SA Tourism Commission

The SA Tourism Commission has budgeted \$100,000 through its Year of the Outback program to focus on the total solar eclipse. These funds have gone towards the appointment of an event co-ordinator, Mr Rob Curkpatrick, who has been contracted by Ceduna Council since January 2002 and subsequently appointed to coordinate planning for the Flinders Ranges and Outback SA, to work with the SATC's Year of the Outback group on planning for the total solar eclipse.

These funds are also being used to produce an event, safety and town information brochure, website (www.eclipse2002.com.au), a media and PR strategy and for extensive community consultation. SATC have also funded the work being carried out by Alec Stevens to develop the Flinders Ranges and Outback risk management plan.

SATC will oversee the development and management of the eclipse sites, in conjunction with the local Infrastructure and Emergency Services Committees and continue to liaise with local communities to facilitate management of the event.

3.8.1.2 SA Police

SAPOL, through Superintendent Wayne Bristow of the Northern Areas Police, and Senior Sergeant Kym Thomas of the Ceduna Police, have invested considerable time and human resources in

the development of the Infrastructure and Emergency Services Committees for Flinders Ranges and Outback and for Ceduna and the corresponding risk assessment and contingency plans.

SAPOL is working closely with the Year of the Outback Steering Committee on policing and safety issues and have undertaken to manage rosters and absorb the necessary overtime costs, additional vehicles, aircraft and security staff from within existing departmental budgets.

3.8.1.3 Department of Human Services

The Department of Human Services (DHS) has provided the Government's official statement on eye safety and viewing an eclipse and will be responsible for distribution of this information and public health and safety information. DHS has also worked closely with the District Council of Ceduna on evaluating the upgrading of its effluent system.

In addition, it is monitoring health and food related issues for events that are occurring throughout the Eyre Peninsula, Flinders Ranges and Outback Areas and will provide additional health inspectors for the period of the eclipse. Hospitals will ensure sufficient staff, drugs and equipment are available.

3.8.1.4 Transport SA

Transport SA is planning road upgrading and signage to cope with the expected increase in traffic during the period of the total solar eclipse. Transport SA is also working closely with the SATC's Eclipse Event Coordinators on other transport and road related issues.

3.8.1.5 Primary Industries & Resources SA

Primary Industries & Resources SA will provide additional staff at the Eyre Highway quarantine roadblock and undertake daily monitoring of water quality in Murat Bay.

3.8.1.6 SA Water

SA Water will ensure that maintenance crews are on standby and provide for alternative water supplies in case of emergency.

3.8.1.7 SA Ambulance, Country Fire Service, State Emergency Service

SA Ambulance, CFS and SES will all ensure that additional resources are available for the eclipse period.

3.8.1.8 National Parks & Wildlife SA

National Parks & Wildlife SA have resolved to close parks in the far west to prevent damage to sensitive environments, reduce fire risks and for visitor safety reasons. Additional units and staff will be available during the period of the eclipse.

3.8.1.9 SAICORP

SAICORP will be responsible for the consequent public liability issues.

As outlined above, some agencies are incurring significant additional costs from within departmental budgets.

Whilst there is widespread awareness in the regions of the resource implications of the eclipse, senior management in all departments now need to be conscious of the risks and to prepare for their departments to be on standby for emergencies which could occur during the eclipse period.

If further costs arise due to unforeseen circumstances, agencies may apply to SATC for assistance from the \$170,000 contingency sum proposed for this event. Requests for reimbursement of such extraordinary expenses should be made to SATC within a period of 14 days of the eclipse for consideration.

3.8.2 Non Government Contribution

Local Government and private sector partners such as BAE Systems in Woomera, tourism associations, sponsors and progress associations are investing in provision of public amenities and infrastructure and community activities, including street parades, fireworks, movie nights and heritage tours. In some cases, the costs to small communities will be heavy, for example the District Council of Ceduna estimates that, without assistance, the costs associated with the event could result in a 50% increase in rates in 2003-4.

ETSA Utilities and the Royal Flying Doctor Service have been consulted and will be on standby in case of emergencies.

3.9 Consultation

At the State Government's Year of the Outback Steering Committee's meeting of 11 August 2002, members were briefed on the plan for management of the eclipse and agreed with the report directions. Members were also briefed on the need to find financial resources to manage the event on a whole of Government basis. A list of members of the committee is attached (see Attachment 3).

In addition, Government agencies, through briefings at the Infrastructure and Emergency Services Committees in Ceduna and Port Augusta, are aware of the need to find financial resources to manage the response required for this event. A list of members of these committees is attached (see Attachment 4).

Considerable consultation has also occurred with Outback communities and Local Government throughout the South Australian Outback, NRG Flinders (Town Manager Leigh Creek) and BAE Systems (Town Manager Woomera), the Northern Region Development Board, tourism operators and other organisations.

Superintendent Wayne Bristow of the SAPOL in Port Augusta is planning rosters and emergency response units within existing financial resources and is confident that he will be able to manage commitments.

Local Health Services and Transport SA officers involved in briefings over 5th, 6th and 7th of August are preparing rosters for an influx of people and to carry out works in accordance with plans. The Royal Flying Doctor Service is also preparing for the event, as are other community medical and hospital service providers.

Community briefings in Woomera, Roxby Downs and Leigh Creek on 5th, 6th and 7th of August and Ceduna on 13th of August also indicated high levels of

local Government and town management agencies financial commitments in preparatory stage for the event.

Treasury and Finance has been consulted on the request for funds.

3.10 **Community and Environmental Impact**

Small Business – the large numbers of additional visitors to remote outback areas will provide a significant opportunity for small businesses in these areas.

Regional – while the extra visitors will bring additional business to outback areas, services and infrastructure are likely to be under severe pressure.

Environmental – action is required to avoid environmental damage to sea (through effluent discharge at Ceduna) and to land and property in pastoral areas.

4. RECOMMENDATIONS

It is recommended that Cabinet:

- 4.1 Approves a special allocation of \$600,000 for:
 - contribution to upgrade the effluent system at Ceduna (\$220,000);
 - information and basic infrastructure at 'Eclipse Centreline Sites' (\$210,000);
 - contingency sum for unforeseen events requiring additional response by state or local government agencies and for rehabilitation works (\$170,000);
 in preparation for the total solar eclipse event on 4 December 2002.

- 4.2 Notes that of this funding of \$600,000:
 - \$430,000 will be advanced to SA Tourism Commission for Ceduna effluent works and information and infrastructure requirements for 'Eclipse Centreline Sites';
 - after the eclipse, local and state government agencies may seek reimbursement for unforeseen events requiring additional response and for rehabilitation works on an acquittal basis to a maximum of \$170,000;
 - all expenditure items will be approved by the Chief Executive of the South Australian Tourism Commission or his delegate.

- 4.3 Notes that the State Government's Year of the Outback Steering Committee has been and will continue to plan for and manage the total solar eclipse event.

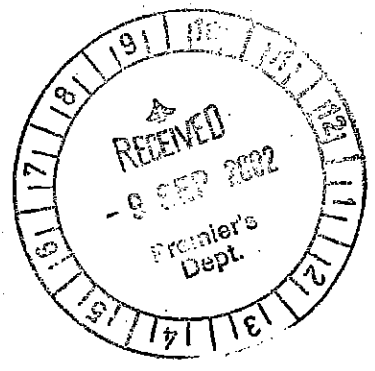
- 4.4 Notes that additional resources have and will be allocated from internal budgets by the SA Tourism Commission, Department of Human Services, SAPOL, Transport SA, SA Water, National Parks & Wildlife SA, SA Ambulance, CFS, SES and Primary Industries & Resources SA. SAICORP will be responsible for public liability issues.

MIKE RANN
Premier

219 /2002

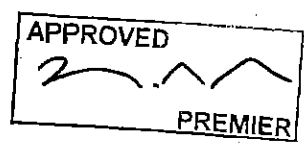
JANE LOMAX-SMITH
Minister for Tourism

319 /2002

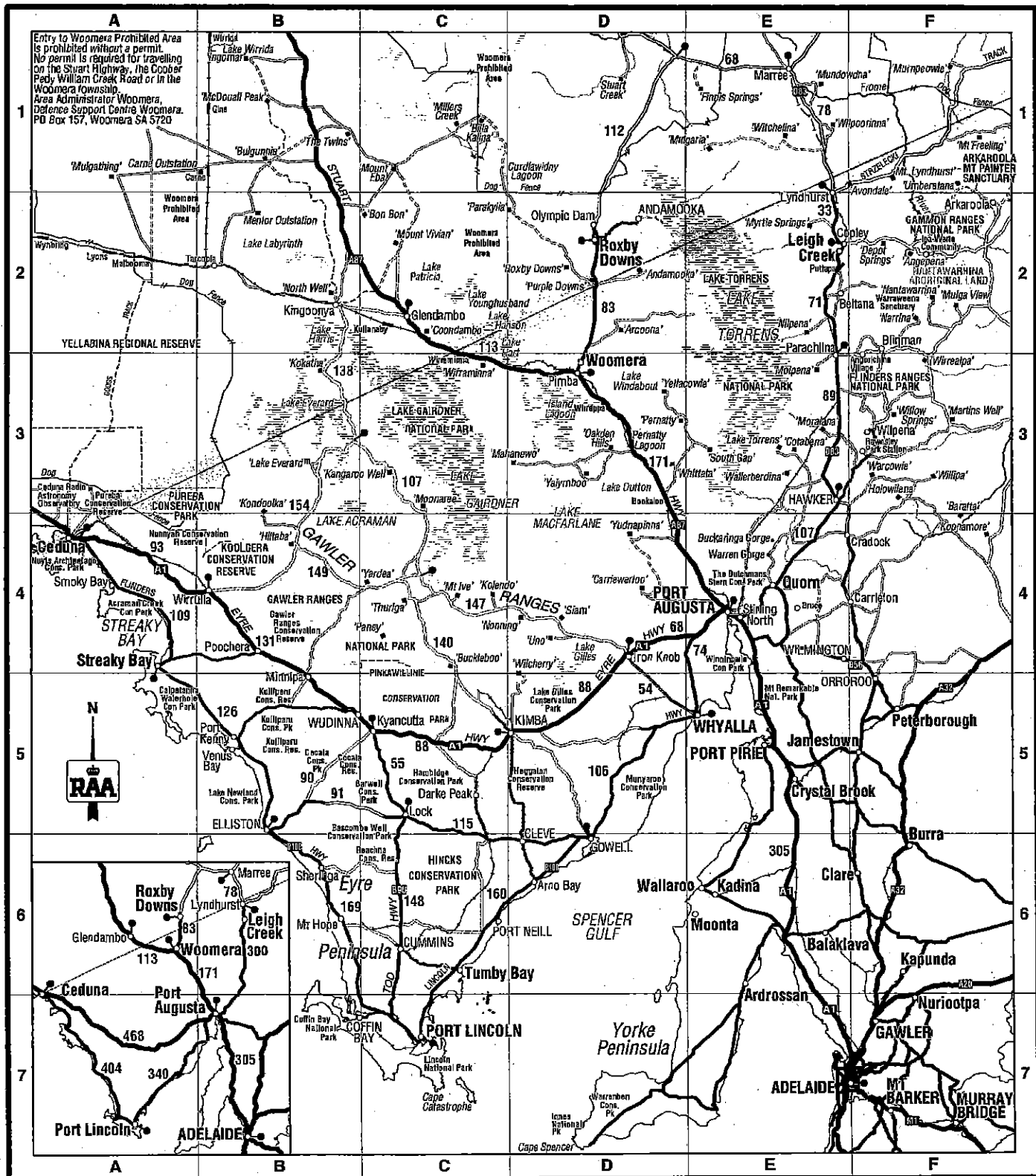


In Cabinet

16 SEP 2002



TOTAL SOLAR ECLIPSE DECEMBER 4 - 2002



© RAASA0802
Base map and data supplied courtesy of the RAA of SA Inc. and reproduced with permission.

14. SEWERAGE

STEDS SCHEME
EXPENSES

OPERATIONAL

Normal Operations	Effluent Drainage Systems - Ceduna & Thevenard		
	Wages	26,176	
	Admin. Wages (1220 Grant 6400 Admin)	7,620	
	Contractural Services	8,000	
	Materials	28,000	
	Plant & Machinery	5,300	
	Other		
	Electricity		75,096
	Pumping System Assessment		
	Wages		
	Contractural Services - Consultants		
Eclipse Expense	Desiudge Septic Tanks		
	Wages	2,880	
	Salary	1,232	
	Contractural Services	57,000	61,112
	CAPITAL		
Eclipse Expense	Pump Station Metering		
	Salary	2,440	
Not required - no time have to act now & estimated useage	Wages	2,191	
	Contractural Services	800	
	Plant & Machinery	456	
	Materials - Other	18,000	nil
New Capital Upgrade	Effluent Drain - Schwarz Rd CAPITAL;		
	Wages		
	Admin. Wages		
	Contractural Services	115,225	
	Materials		
	Plant & Machinery		
	Other		
	Electricity		115,225
Deferred to Next Year	Effluent Ponds - Irrigation		
	Salary		
	Wages		
	Contractural Services		
	Materials		
	Plant & Machinery		
Eclipse Expense	Pump Station 1A Replacement		
	Salary	2,464	
	Wages	2,191	
	Contractors	2,500	
	<u>Other (Pump Station was estimated at \$32,000)</u>	39,980	
	Plant & Machinery	1,760	48,895

<u>Eclipse Expense</u>	<u>Pump Station 3 Upgrade</u>		
	Salary	2,464	
	Wages	5,478	
	Plant & Machinery	1,760	
	Contractual Services	2,500	
	<u>Other (Pump Station was estimated at \$24,000)</u>	<u>50,983</u>	63,185

<u>Eclipse Expense</u>	<u>Pump Station 4 Upgrade</u>		
	Salary	1,848	
	Wages	3,652	
	Plant & Machinery	1,760	
	Contractual Services	2,500	
	<u>Other (Pump Station was estimated at \$22,000)</u>	<u>63,617</u>	73,377

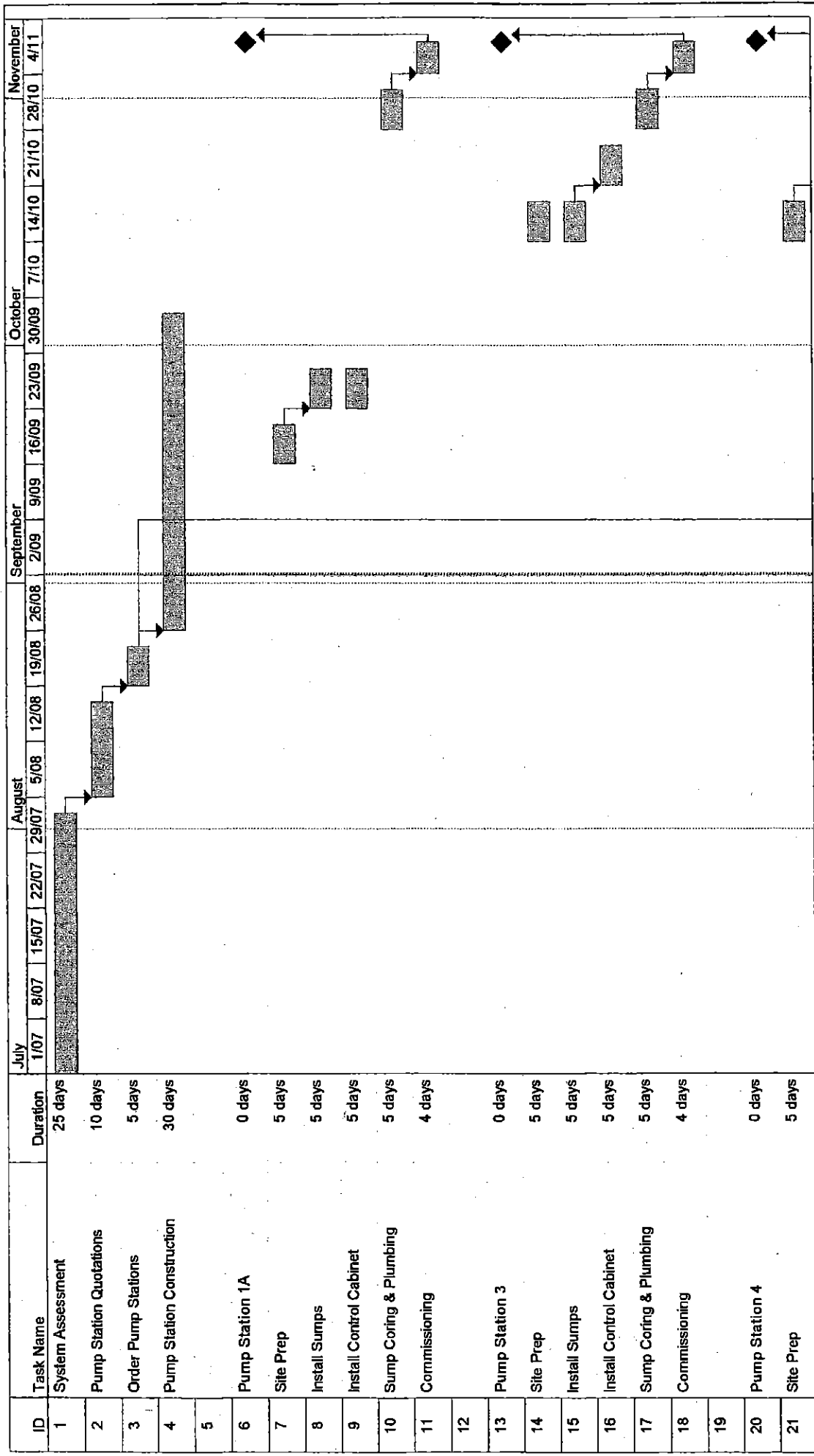
<u>Eclipse Expense</u>	<u>Pump Station Back Up Power Supply</u>		
	Salary	1,848	
	Wages		
	Plant & Machinery		
	Contractual Services		
	<u>Other (Power Plant portable estimate was \$29,000)</u>	<u>20,200</u>	22,048

<u>Eclipse Expense</u>	<u>Rising Main 1 Replacement</u>		
	Salary		
	Wages	2,739	
	Plant & Machinery	1,343	
	Contractual Services	300	
	Materials - Other	<u>8,550</u>	12,932

Net Worth 471,870

Expenses due to the Eclipse 281,549

Revised 2/9/02



Task
 Split
 Progress
 Milestone
 Summary
 Rolled Up Task
 Rolled Up Split
 Rolled Up Milestone
 External Tasks
 Project Summary

Project: Ceduna STEDS Eclipse Upgr
 Date: Mon 2/09/02

Year of the Outback Steering Committee

Mr Bill Spurr
Chief Executive
SA Tourism Commission

Mr Greg Leaman
Director
National Parks and Wildlife

Mr Bill McIntosh
Chairman
Outback Areas Community Development Trust

Mr Robert Ryan
Public Affairs Manager
Royal Flying Doctor Service

Mr Trevor Argent
Executive Director
Transport SA

Mr Roger Wickes
A/Executive Director Food & Fibre
Primary Industries and Resources SA

Dr Rod Givney
Medical Consultant
Department of Human Services

Mr Peter Mildren
Northern Operations Service
SA Police

Mr Phil Tyler
Acting Executive Director
Office of Regional Affairs

Mr Andrew Watson
Regional Director
Bureau of Meteorology

**Eclipse in the Outback
Infrastructure & Emergency Services Committees**

**EYRE PENINSULA
(CEDUNA)**

Kym Thomas
Officer In Charge
SA Police
Ceduna

Mark Hewitson
Country Fire Services
Ceduna

Allan Whitehouse
ATSIC
Ceduna

Peter Codrington
SES
Ceduna

Mike Lowe
SA Ambulance
Ceduna

Brett Dalzell
Dept. Environment & Heritage
Ceduna

Grant Drummond
The District Council of Ceduna
Ceduna

Tony Irvine
The District Council of Ceduna
Ceduna

Chris Holland
Manager Environmental Svces & Planning
Ceduna

Gordon Hartley
SES
Port Lincoln

Neil McArthur
Bureau of Meteorology
Ceduna

Brian Bascombe
Business Manager
Family & Youth Services
Ceduna

Rob Curkpatrick
Events Co-ordinator
The District Council of Ceduna
Ceduna

Sandra Bebbington
Chief Executive Officer
Ceduna & Dist. Health Service
Ceduna

Simon Vogel
Regional Prevention Officer
Country Fire Service
Port Lincoln

Andrew Lane
D.O.N
Ceduna & Dist. Health Service
Ceduna

Alan Hogben
Dept of Human Services
Port Lincoln

Maree Wauchope
Transport SA
Port Augusta

**FLINDERS & OUTBACK
(PORT AUGUSTA)**

Wayne Bristow
Superintendent
Far North LSA
SAPOL
Port Augusta

Ashley Traeger
SAPOL
Leigh Creek

Dale Burford
SAPOL
Port Augusta

Craig Steel
DHS
Adelaide

Alan Hogben
Dept of Human Services
Port Lincoln

Maree Wauchope
Transport SA
Port Augusta

Rob Curkpatrick
Project Co-ordinator
SA Tourism Commission
Adelaide

Paul Victory
Manager YOTO
SA Tourism Commission
Adelaide

Peter Scott
SES
Port Augusta

Kevin May
CFS
Port Augusta

Graham Denton
SA Ambulance
Port Augusta

Craig Stephens
SA Ambulance
Whyalla

Tony Wade
RFDS
Port Augusta

Brenton Arnold
NP&WS
Port Augusta

Ken Anderson
NP&WS
Port Augusta

Ken Rickard
PIRSA
Adelaide

Bruce Baker
PIRSA
Port Augusta

Stuart Gibbs
Bur. Meteorology
Adelaide

Malcolm Harrison
Bur. Meteorology
Port Augusta

Brian Dearlove
Transport SA
Port Augusta

Mark Sutton
Outback Areas Community Lands Trust
Port Augusta

Pauline Hedger
Visitor Information Centre
Port Augusta

