



Government
of South Australia

Department of the
Premier and Cabinet



Easy Read

Our plan to help people with disability to belong:

2026 to 2030



Table of contents

About this paper	3
About us	7
Places and communities for everyone	10
Learning and work	25
Help for yourself and in your community	32
Being healthy and happy	37
Safety, rights, and fairness	40
How to contact us	43

About this paper

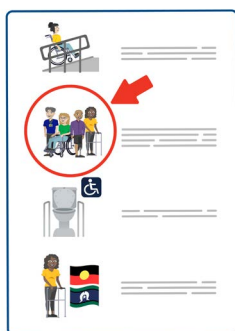


**Government
of South Australia**

Department of the
Premier and Cabinet

The Department of the Premier and Cabinet wrote this paper.

When you see the word 'we', 'us', or 'our', it means the Department of the Premier and Cabinet.



We wrote this paper in an easy to read way.

We use pictures to explain ideas.



This paper has some hard words.

The first time we write a hard word:

- We will write it in **bold**.
- We will explain what the hard word means.

About this paper



You can ask for help to read this paper.

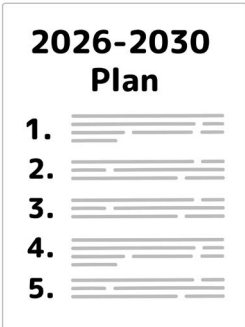
A friend, family member, or **support person** can help you.

A support person is someone who helps you with things you find hard to do by yourself.



This paper is about our new plan to help people with disability belong.

Our plan tells you what we will do between 2026 and 2030.



Our new plan has 73 things we want to happen across 5 important areas.

These important areas are:

About this paper



1. Places and **communities** for everyone.

Communities means groups of people who live, work, and spend time in the same area.



2. Learning and work.



3. Help for yourself and in your community.

About this paper



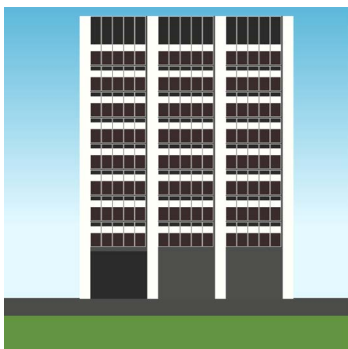
4. Being healthy and happy.



5. Safety, **rights**, and fairness.

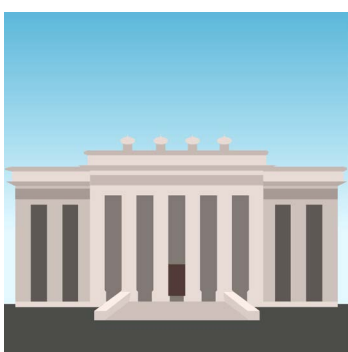
Rights means things everyone should be allowed to have or do.

About us



We are the main **government department** in South Australia.

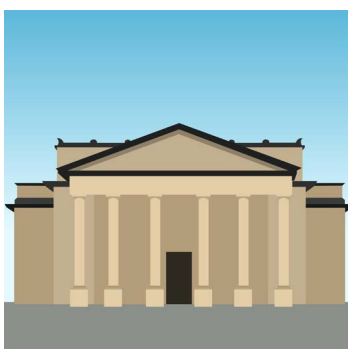
Government departments are groups that look after and make rules for one area of life.



We help the **Premier** and **Cabinet** do their work.

Premier means the leader of the South Australian Government.

Cabinet means a small group of government leaders who each look after an area of life, like health.



The buildings we look after are also part of our government department.

This plan also includes the **Cultural Institutions**.

Cultural Institutions means:

- **The Art Gallery of South Australia.**

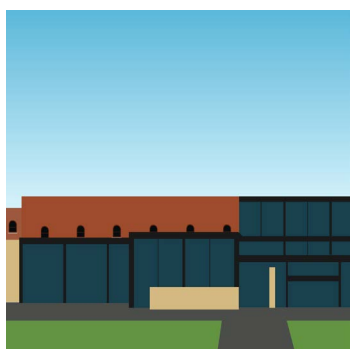
The Art Gallery of South Australia is a place you can visit to see art.

About us



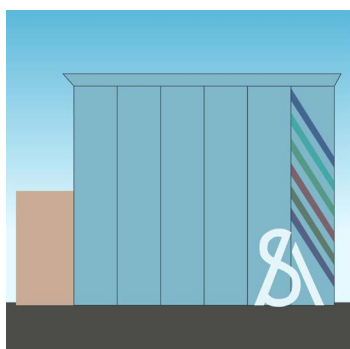
- **Carrick Hill.**

Carrick Hill means a big old house and garden that anyone can visit.



- The South Australian **Museum.**

Museum means a place you can visit to see old and important things.



- The State **Library** of South Australia, including Public Library Services.

Library means a place where you can borrow books, DVDs, and toys.

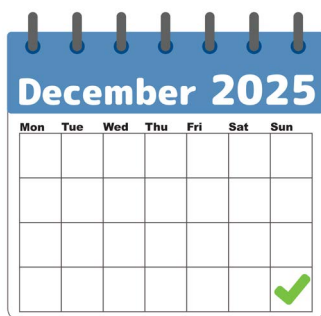
About us



We want to make South Australia a better place.



We want everyone to be able to use our services.



As of 31 December 2025, we had 725 workers.



15 of our workers told us that they live with disability.

Places and communities for everyone



We want people with disability to take part in the community.

We will:

- Make sure our events for more than 50 people are easy for everyone to come to.



This includes having help for people with hidden disabilities and a **sensory space**.

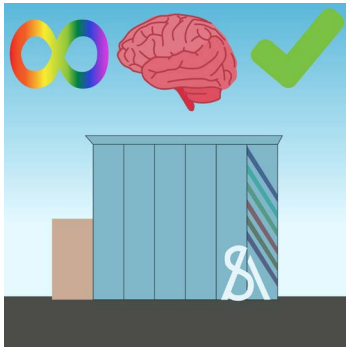
Sensory space means a place you can go to feel calm if you are upset or need a break.

A sensory space is quiet, has soft lights, and things you can touch to relax.



- Run activities for people with disability at the Art Gallery, Museum, and State Library.

Places and communities for everyone



- Work with Adelaide City **Council** to make the State Library and City Library easy to use for **neurodivergent** people.

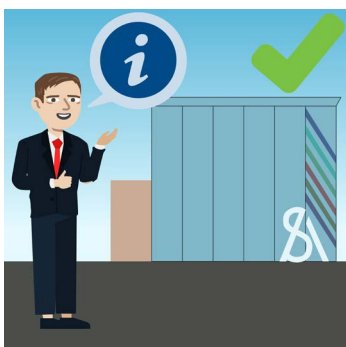
Council means a group of people who lead an area and make big decisions about how they should do things.

Neurodivergent means a person's brain works differently from most people.

A neurodivergent person might find it harder to think, learn, and talk to other people.



This includes adding dimmed lighting and quiet spaces.

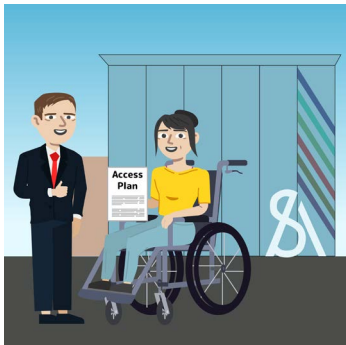


- Let people know that public libraries are easy to use places to learn and find information.

Places and communities for everyone



- Let people know about new technology to help everyone use services, places, and collections at the Cultural Institutions.



- Keep working with people with disability and following their **Access Plans** so it is easier for them to visit the State Library.

Access Plan means a plan to make it easy for people with disability to take part.



- Work with groups who speak up for people with disability to help everyone visit the Cultural Institutions.

Places and communities for everyone



We want people with disability to be respected and included in the community.



We will:

- Let more people know about artworks by artists with disability.



- Let more people know about books by writers with disability and that are about people with disability.

Places and communities for everyone



- Look at ways to show the work of **researchers** with disability in the Sprigg Series in the Museum.

Researchers means people who find out information to help everyone learn and understand more.

The Sprigg Series is a collection of very old bones, shells, and shapes left in rocks from dead plants and animals.



- Work with **First Nations** peoples and our **Nunga Network** about how to make it safer for First Nations peoples to:

- Get jobs.
- Help to feel happy.

First Nations means the first groups of people who lived in Australia.

Nunga Network means a group of our First Nations workers who tell us how we can make our workplace better.

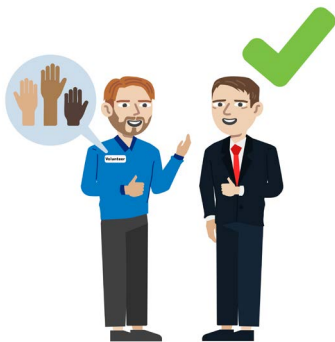
Places and communities for everyone



- Work with people with disability, **Autistic**, and neurodivergent people to update online learning about disability that our workers must do.

If you are Autistic, it means that your brain works differently from most people.

Autistic people might find it harder to think, learn, and talk to other people.



- Help our workers and **volunteers** learn how to make it easier for everyone to visit and use the Cultural Institutions.

Volunteers means people who choose to work without getting paid.

Places and communities for everyone



- Work with important groups to teach **arts** groups about how to include people with disability.

Arts means ways to show ideas and feelings.

This includes drawing, painting, music, singing, dancing, and acting.



We want everyone to be able to visit and enjoy buildings and outdoor spaces.

We will:



- Change public buildings and outdoor spaces so they are easier to enter and use for everyone.

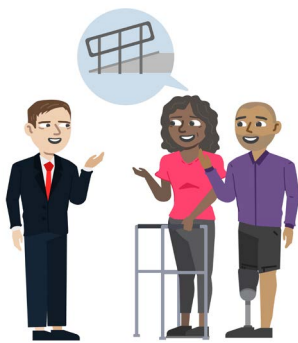
This includes adding signs and wider doors.

Places and communities for everyone



- Make sure new **exhibitions** at the Cultural Institutions are easy for everyone to enter and use.

Exhibitions means events where you can look at art, objects, and information to learn about and enjoy.

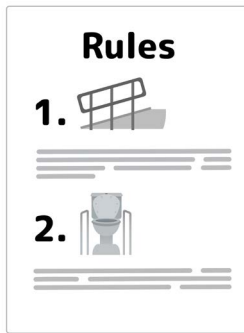


- Make sure places are easy for everyone to use when planning the **North Terrace Cultural Precinct**.

North Terrace Cultural Precinct means buildings and outdoor spaces on North Terrace in Adelaide.

This includes asking people with disability about how we can make it better.

Places and communities for everyone



- Add a rule in all project instructions that we must make buildings as easy for everyone to use as we can.



We want people with disability to be able to use the right toilets for them when they are out in the community.



We will:

- Change signs across the North Terrace Cultural Precinct to help people with disability find toilets on their own.

Places and communities for everyone



- Ask to add Cultural Institution toilets for people with disability on the **National Public Toilet Map**.

The National Public Toilet Map is an online map that shows you where to find public toilets across Australia.



We want people with disability to find the information they need in easy to understand ways.



We will:

- Check that our websites follow the latest rules about how to make online spaces easier to use for everyone.



- Check every year that our **emergency** plan explains how we will share important information with people with disability.

Emergency means when something bad happens and you need help right away.

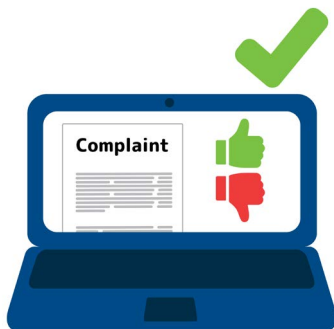
Places and communities for everyone



This includes **Auslan** and other ways people with disability share information with each other.

Auslan means Australian Sign Language.

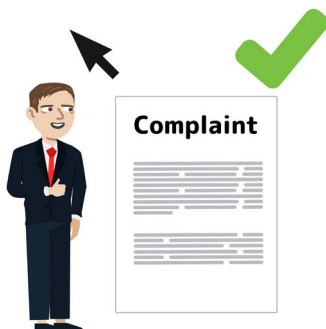
Auslan is used by people who are Deaf and find it hard to hear.



- Check that the way we get **complaints** and ideas from people with disability is easy for them to use.

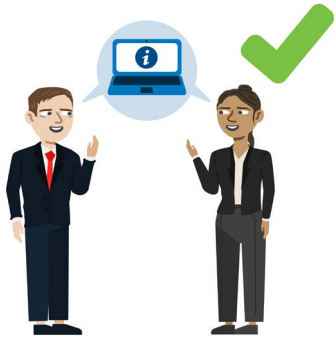
Complaints means when you tell someone about problems you are unhappy about.

This includes giving information to people with disability in easy to understand ways.



- Listen to complaints and ideas and make sure we fix problems for people with disability.

Places and communities for everyone



- Help our workers who make online information and papers to learn about how to make things easy for everyone to use.



We want people with disability to get to where they need to go in safe ways.



We will:

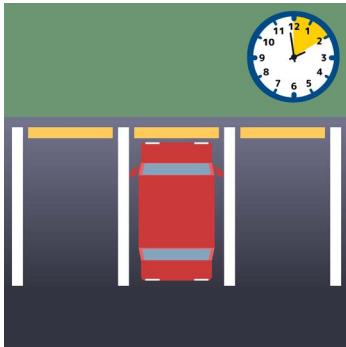
- Let our workers with disability know that they can get cheaper travel costs.

Places and communities for everyone



- Look at how easy it is for people to park, read signs, and enter places across the North Terrace Cultural Precinct.

We will also think about adding more car parks for people with disability.



- Work with Adelaide City Council to look at changing rules for short time parking on Kintore Avenue.

This will make it easier for everyone to visit the State Library and the City Library.

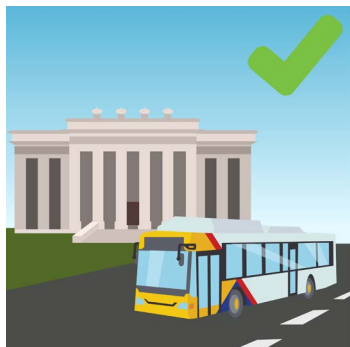


- Look at adding places to charge **mobility scooters** at the Cultural Institutions.

Mobility scooters means small chairs with wheels that help people who cannot walk far to move around.

We will also put information about where to charge mobility scooters on the Cultural Institution websites.

Places and communities for everyone



- Work with Adelaide Metro to see if the Free City Loop Bus can stop closer to the North Terrace Cultural Precinct.

This will make it easier for everyone to use public transport to visit.



We want people with disability to be included in government decisions about them.

Places and communities for everyone

We will:



- Make sure that we ask for ideas from people with disability about our rules and projects.

This will include First Nations peoples with disability.



- Check that our **Diversity and Inclusion Advisory Committee** includes workers with disability and who are **carers**.

Diversity and Inclusion Advisory Committee means a group of people who help make sure that everyone is included.

Carers means people who help people who need extra help to live well without getting paid.

Learning and work

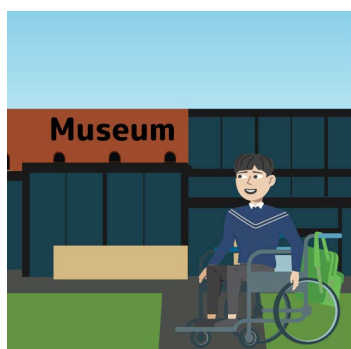


We want children with disability to feel welcome and important in schools.

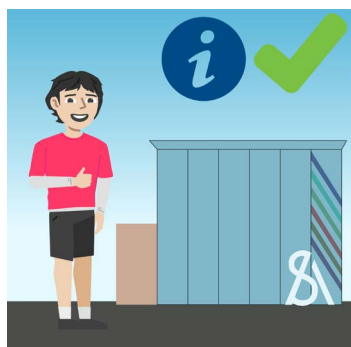


We will:

- Work with other government departments to help children with disability in the northern suburbs of Adelaide live better lives.



- Keep making it easy for all children to visit the Museum with their school.



- Check if we have information for parents and carers in our public libraries about helping children with disability learn.

Learning and work



We want people with disability to have help to learn, grow, and change during their life.

We will:



- Check that our rules for getting volunteers make it easy for everyone to take part.

This includes people with disability, Autistic, and neurodivergent people.



- Think of ways to get more people with disability to volunteer in the Cultural Institutions and make the work easier for them.

Learning and work



We want people with disability to do well in the jobs that they want.

We will:



- Try to get at least 7 more workers with disability every year.

This includes helping our workers feel safe to tell us they have a disability.



- Make it easier and safer for people with disability to ask to work for us.

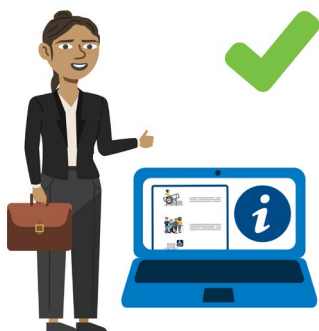
This includes rewriting our job information to let people know we will help them at work.

Learning and work



- Keep working with **JobAccess** to let people with disability know about jobs we have.

JobAccess means a service that helps Australians with disability to find and keep jobs.



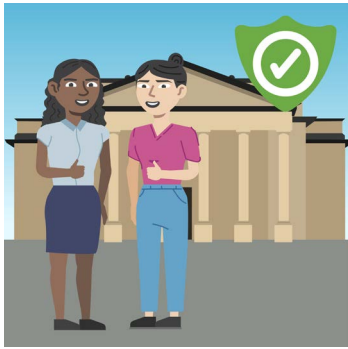
- Make sure our workers can learn how to do their jobs in easy to understand ways.

We will also let our workers know that they can ask for changes to how they learn.



- Check that we make changes to our online learning to make it easy for all workers to use.

Learning and work



- Make sure our workers in the Cultural Institutions feel safe and that they belong at work.



We want people with disability to get help to find and keep a job.

Learning and work



We will:

- Make better rules for workplace changes for our workers with disability and let our workers know about them.



- Check that all of our workers finish the disability learning that they must do.



- Make changes to our workplaces so they are easier to use for everyone.

This includes workers with disability and who are neurodivergent.

Learning and work



We want people with disability to help us get better information about disability across South Australia.



We will:

- Ask our workers with disability to tell us information about their disability.



- Make sure we tell our new workers:
 - How we will use their information.
 - That we will keep their information private.
 - What disability means to us.

This is so our workers feel safe to tell us about their disability.

Help for yourself and in your community



We want it to be easy for people with disability to get help from community services.



We will:

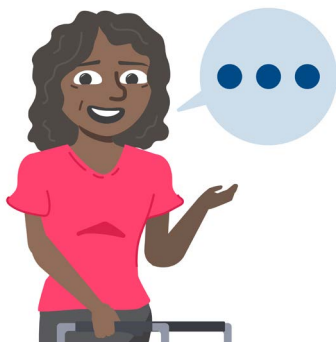
- Share information about community services for our workers with disability and who are carers.

We will also check the information we share and make changes every year.



We want people with disability to be able to:

- Make their own choices.



- Ask for help to speak up about their rights.

Help for yourself and in your community

We will:



- Ask our workers to learn about the Hidden Disabilities Sunflower.

This includes asking our workers to help people with hidden disabilities as part of their job.



We want people with disability to get good help and information from services.

We will:



- Make better plans to help people with disability before, during, and after an emergency.

Help for yourself and in your community



- Make a **working group** to help more people with disability visit the Cultural Institutions.

Working group means a group of people that help fix problems.



- Think about making groups or events where people with disability can tell us how to make visits to the Cultural Institutions easier.



We want carers and families of people with disability to be able to get help from services.

This includes brothers and sisters of people with disability.

Help for yourself and in your community

We will:



- Update our disability and carers webpage at least once a year with helpful information for workers with disability.

This will also help our team leaders to help workers with disability.



We want activities and services paid for by the Government to help people with disability to take part in the community.

Help for yourself and in your community

We will:



- Give money to the **Richard Llewellyn Arts and Disability Program** to help artists with disability get paid for their work.

This means a government plan that helps South Australian artists with disability get paid to make art.



- Make it easier for people with disability to ask for money from **CreateSA**.

CreateSA means a government activity that gives money to artists to help make art.



- Tell all the groups who get money from us that they must have a plan to help people with disability belong.

Being healthy and happy



We want people with disability to get health care that meets their different needs.

This includes helping carers to help people with disability get good health care.



We will:

- Run a Community Services Hub at our **Multicultural Festival** every year.

Multicultural Festival means a special event where people from different **cultures** can spend time with each other.

Cultures means groups of people who have the same ways of living.

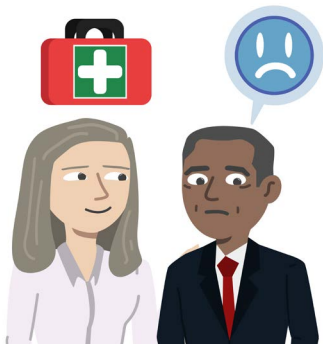
This includes their beliefs and the languages they speak.

Being healthy and happy



This will help people with disability from different cultures to get free health checks and information.

We will:



- Help our workers get help from Mental Health **First Aiders** when they have **mental health** problems.

First Aiders means people who help you first when you are sick, hurt, or upset.

First Aiders help you stay safe before a doctor helps you.

Mental health means how you think and feel in everyday life.



- Check for things that could make our neurodivergent workers and workers with disability feel unsafe.

We will fix problems to help all of our workers stay safe.

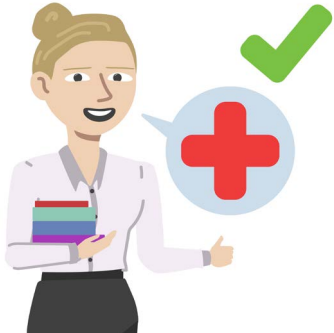
Being healthy and happy



- Help all of our workers take part in a plan to help everyone feel happy and safe.



- Check often that this plan is good at helping neurodivergent workers and workers with disability.



- Think about teaching State Library workers to become First Aiders and Mental Health First Aiders.

Safety, rights, and fairness



We want people with disability to stay safe during an emergency and get help first.

We will:



- Check our emergency plan every year to make sure people with disability stay safe during and after an emergency.



- Help our workers with disability make plans to leave buildings and stay safe in an emergency.

We will also check these plans often.

Safety, rights, and fairness



- Check emergency plans and safe places for the Cultural Institutions so visitors with disability stay safe when they leave.



We want people with disability to get the help they need when using the **justice system**.

Justice system means how rules are used to keep things safe and fair for everyone.

The justice system includes the police and courts.

Safety, rights, and fairness

We will:



- Check our **grievance process** to make sure it is easy to use for workers with disability.

Grievance process means a way to tell someone when something is wrong at work.



We want people with disability to get safe help that works for them.



We will:

- Check rules, police checks, and child safety checks often to keep everyone safe in the Cultural Institutions.

How to contact us



You can visit our website at:

<https://www.dpc.sa.gov.au/>



You can call us on this number:

08 8226 3500



You can email us at this address:

DPCOrganisationalDevelopment@sa.gov.au



You can send us a letter to:

Principal Officer, Diversity and Inclusion
GPO Box 2343
Adelaide SA 5001



easyread.tech created this Easy Read document using original illustrations. Please do not use these illustrations without permission. Visit [easyread.tech](https://www.easyread.tech) for more information.